

Argox Bartender UL Form-making User Guide

V1.02

2010/12/29

The contents of this manual are based on
BarTender 9.30 2731 and Seagull Driver 7.2_M-1

Table of Contents

| | | |
|-------|---|----|
| 1 | What is the Form-making label file? | 3 |
| 2 | The Purpose of the Form-making label file | 3 |
| 3 | Supported Versions | 3 |
| 4 | Supported Languages | 4 |
| 5 | Form-making conversion for BarTender | 4 |
| 5.1 | Argox ArgoKee(SRAM) | 4 |
| 5.2 | Argox ArgoKee(FLASH)..... | 5 |
| 5.3 | Argox READER(FLASH)..... | 6 |
| 6 | Downloading the Form-making label file..... | 6 |
| 6.1 | Installing the driver | 6 |
| 6.2 | Set baud rate..... | 7 |
| 6.3 | Create label and select output printer..... | 8 |
| 6.4 | Download Form-making label file..... | 9 |
| 6.4.1 | Downloading to ArgoKee | 9 |
| 6.4.2 | Download to printer | 12 |
| 7 | Using the Form-making label file | 12 |
| 7.1 | Using ArgoKee to input data..... | 12 |
| 7.2 | Using PS/2 keyboard to enter the data. | 13 |
| 7.3 | Using a scanner to input data | 13 |
| 8 | Data variables in Form-making | 13 |
| 8.1 | TT variable | 15 |
| 8.2 | TD variable | 19 |
| 8.3 | V variable | 21 |
| 8.4 | C variable | 25 |
| 8.5 | Reference | 27 |

1 What is the Form-making label file?

The Form-making data format starts with the FS command, followed by a string inside closed quotation marks “ ” for the form name and ends with the FE command. Anything between FS and FE is the label content. An example of a complete Form-making label file (i.e. the Form name is “EXPORT”) is provided below:

```
ZN
FK"EXPORT"
FS"EXPORT"
I8,1,001
q1215
S4
O
JF
ZT
Q900,37
←KI81
N
FE
```

2 The Purpose of the Form-making label file

The label file can be stored in ArgoKee or the printer. The input devices for different storage devices are as follows:

2.1 ArgoKee

The device shown in the illustration below can be used for data input.



2.2 Printer

A PS/2 keyboard or scanner must be used as the data input device. A PC can also be used to send commands directly to the printer for printing Form-making label files.

3 Supported Versions

BarTender 9.30 2731 or later versions

Seagull Driver 7.2_M-1 or later versions

Attention: Make sure both devices software are the latest versions. If there an error occurs during the data conversion, check the software versions first.

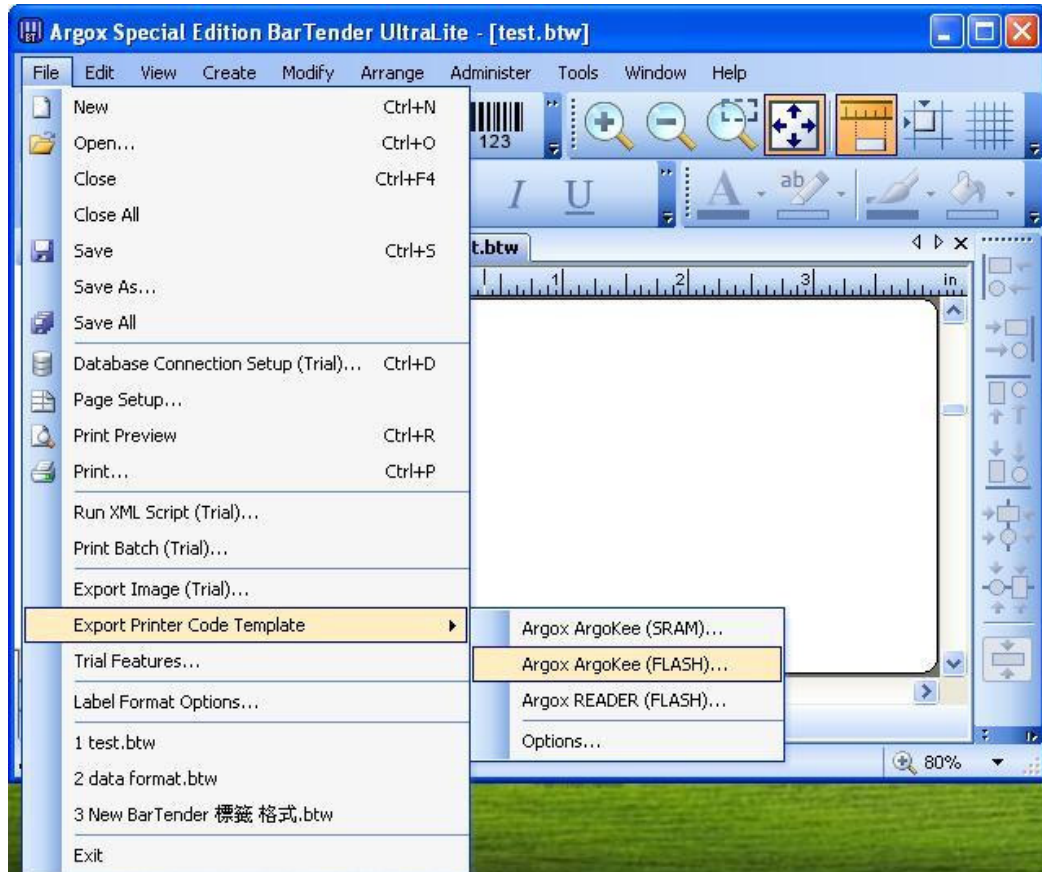
4 Supported Languages

Currently, it is only supported PPLB. The Seagull Driver for PPLB must be used for data conversion.

5 Form-making conversion for BarTender

Since the Form-making data format is different from the original emulation, it must be converted using a different method/path. The path is **“File -> Export Printer Code Template”**.

The three conversion methods currently offered by BarTender are **“Argox ArgoKee(SRAM)”**, **“Argox ArgoKee(FLASH)”**, and **“Argox READER(FLASH)”**.



A description and comparison of these methods will be provided below.

For example, the Argox X-3200 PPLB will be used below to create a 4 X 3 inch blank label for data conversion:

5.1 Argox ArgoKee(SRAM)

5.1.1 Purpose

To be used with ArgoKee and printers.

5.1.2 Comparison

The data saved to ArgoKee will always be stored to FLASH. On the other hand, the data saved to the printer will always be stored to RAM. And those data saved in printers will therefore disappear when power is lost.

5.1.3 Data conversion

ZN
FK"EXPORT"
FS"EXPORT"
I8,1,001
q1215
S4
O
JF
ZT
Q900,37
←KI81
N
FE

5.2 Argox ArgoKee(FLASH)

5.2.1 Purpose

To be used with ArgoKee and printers.

5.2.2 Comparison

Both data are stored to FLASH, so data will not disappear when power is lost.

5.2.3 Data conversion

ZS
FK"EXPORT"
FS"EXPORT"
I8,1,001
q1215
S4
O
JF
ZT
Q900,37
←KI81
N

FE

ZN

5.3 Argox READER(FLASH)

5.3.1 Purpose

To be used with ArgoKee and printers.

5.3.2 Comparison

Both data are stored to FLASH. The difference the two devices, the Form name for the **“Argox ArgoKee(FLASH)”** is always **“READER”** with all capital letters. This option is mainly intended for a scanner usage as the data input device. For this reason, it has one extra command compared to **“Argox ArgoKee(FLASH)”**: **“PA1,1”**. The command means print one copy only. If it is saved to ArgoKee, the user will not be prompted to enter the number of copies after entering the data. One copy will be printed directly.

5.3.3 Data conversion

ZS

FK"READER"

FS"READER"

I8,1,001

q1215

S4

O

JF

ZT

Q900,37

←KI81

N

PA1,1

FE

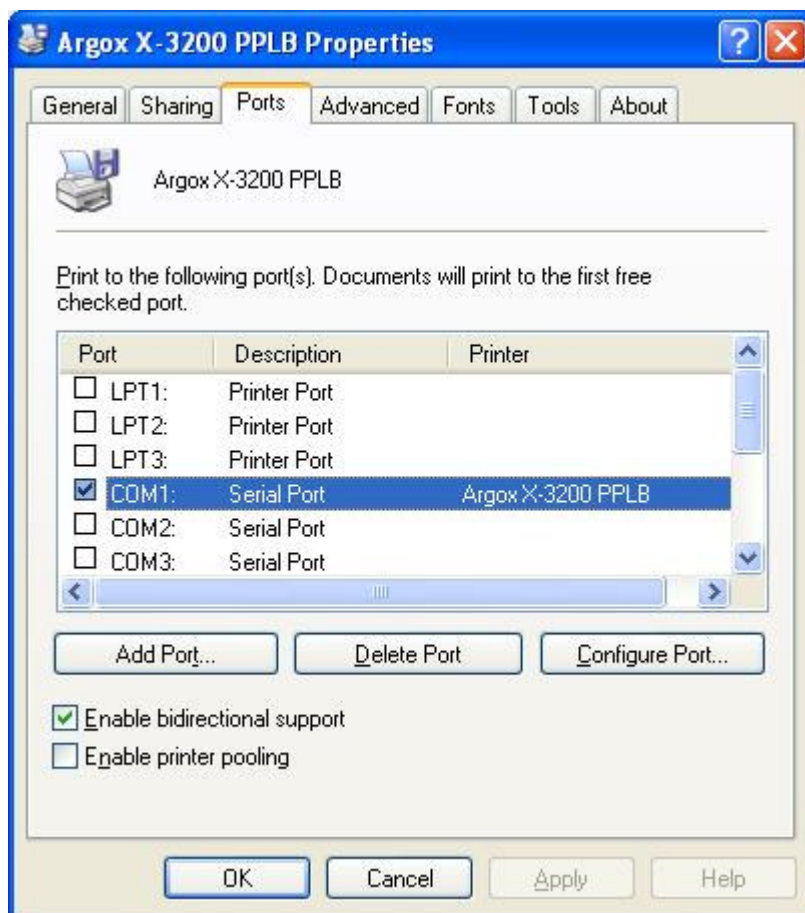
ZN

6 Downloading the Form-making label file

For example, the Argox X-3200 PPLB will be used below to create a 4 X 3 inch blank label.

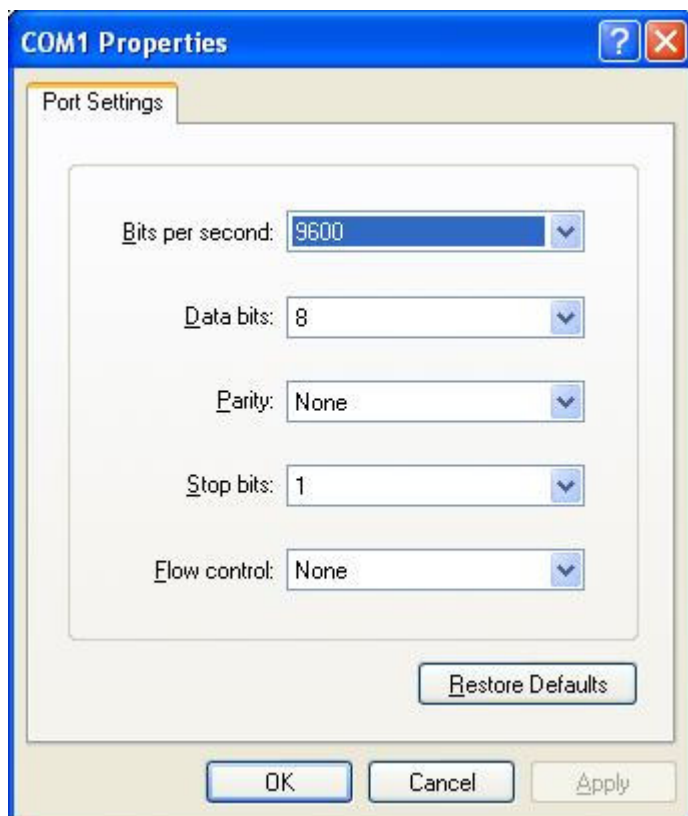
6.1 Installing the driver

Use the Seagull Driver to install the driver for Argox X-3200 PPLB. Set the **“Ports”** as **“COM1”** and the printer details should be as shown below.



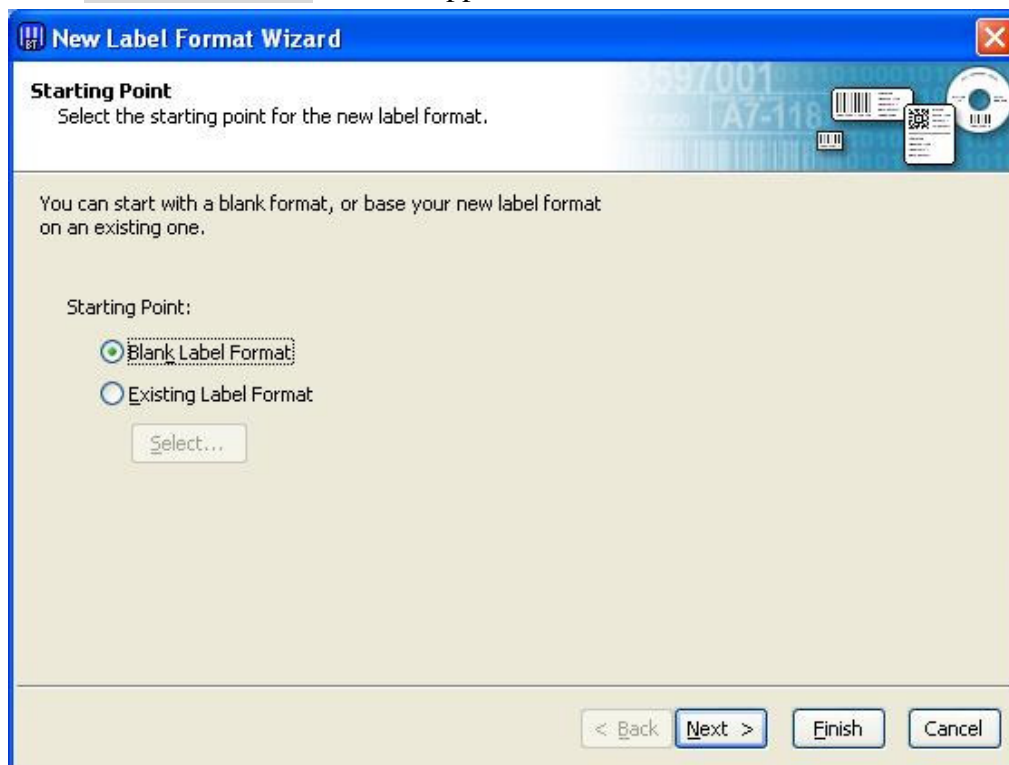
6.2 Set baud rate

The default baud rate for the printer and ArgoKee's COM Port is **9600**, so the COM Port for the PC, printer and ArgoKee should be set to the value shown below. The illustration shows the three default settings and if one of the settings is changed, the other two settings must be changed as well for a proper connection. Details are beyond the scope of this manual.



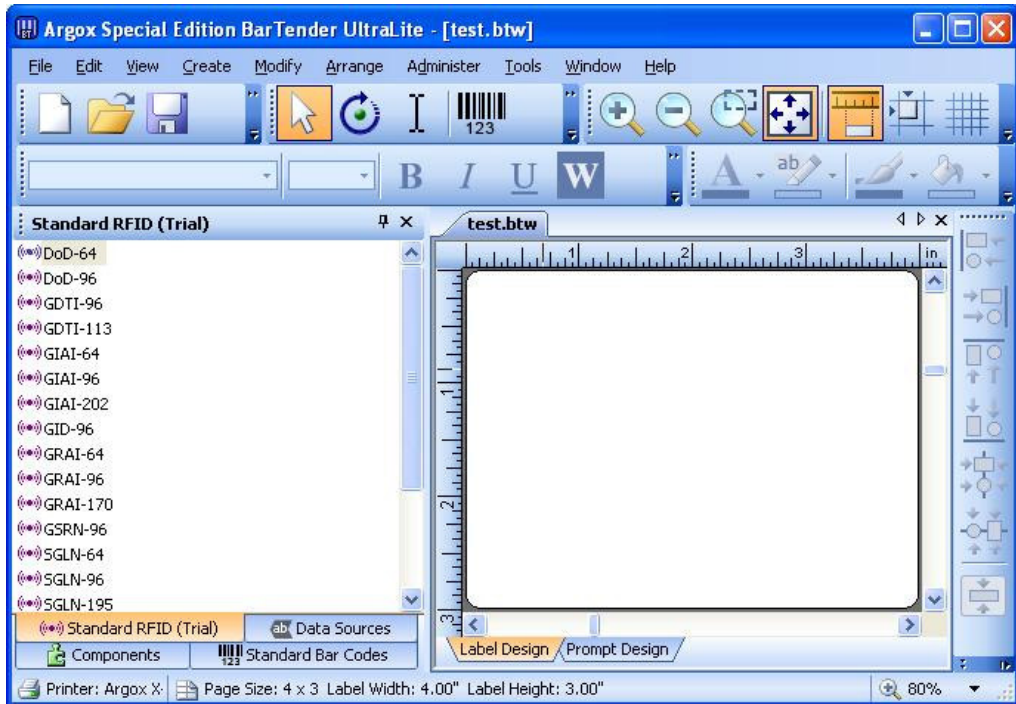
6.3 Create label and select output printer

6.3.1 After launching BarTender, select **“File -> New”**. The **“New Label Format Wizard”** window appears on the screen.



6.3.2 Follow the wizard's instructions to select **“Starting Point -> Printer Selection -> Stock Selection -> Label Stock -> Side Edges -> Label**

Shape -> Label Size -> Finished". After completing the installation, select Argox X-3200 PPLB for creating a 4 X 3 inch blank label as shown below.



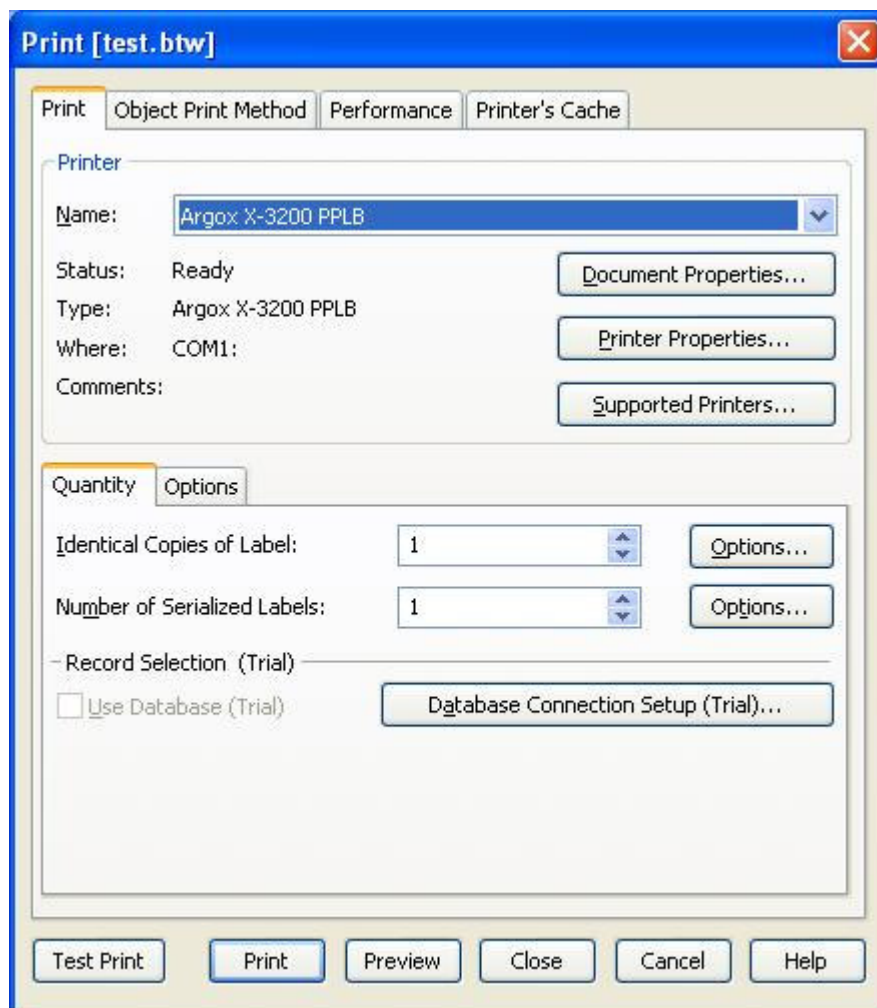
6.4 Download Form-making label file

The methods for downloading to ArgoKee and the printer mentioned in [section 2](#) are described below:

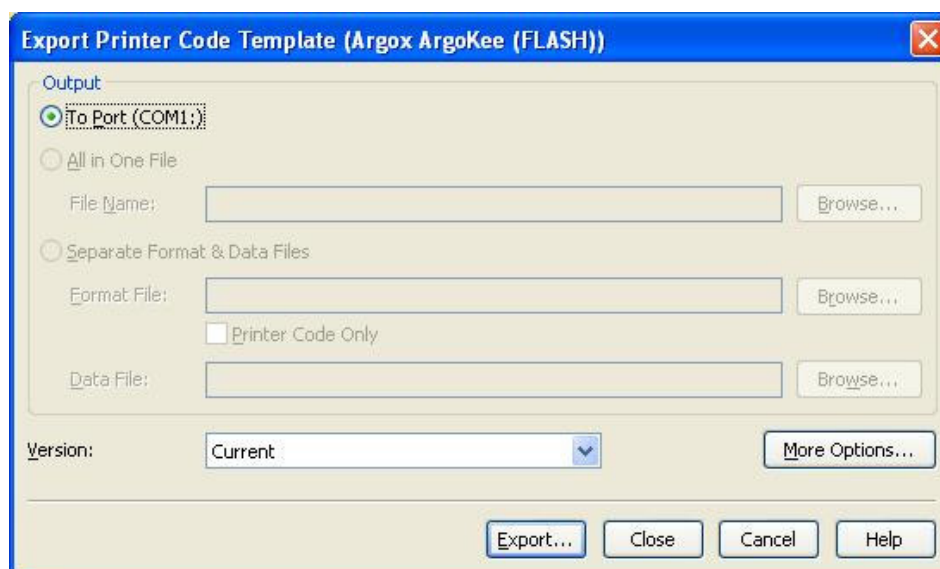
6.4.1 Downloading to ArgoKee

6.4.1.1 First, check that the transmission setting between the PC and ArgoKee compatible with each other, then connect both COM Port with the data cable. Next, press the "D" key on the ArgoKee to enable data receive mode. The LCD on ArgoKee will now show the message **“LOADING FORM ... (HOST ==> K/BOARD)”**.

6.4.1.2 Use the blank label file created in [section 6.3](#) or another file that has been prepared earlier, then select **“File -> Print”**. A window will pop up as shown below. At the **“Print -> Name”** window, select the **“Argox X-3200 PPLB”** printer, and then click **“Close”**.



6.4.1.3 Under **“File -> Export Printer Code Template”**, run **“Argox ArgoKee(SRAM)”** or **”Argox ArgoKee(FLASH)”**. The **“Export Printer Code Template”** window will appear as shown below.



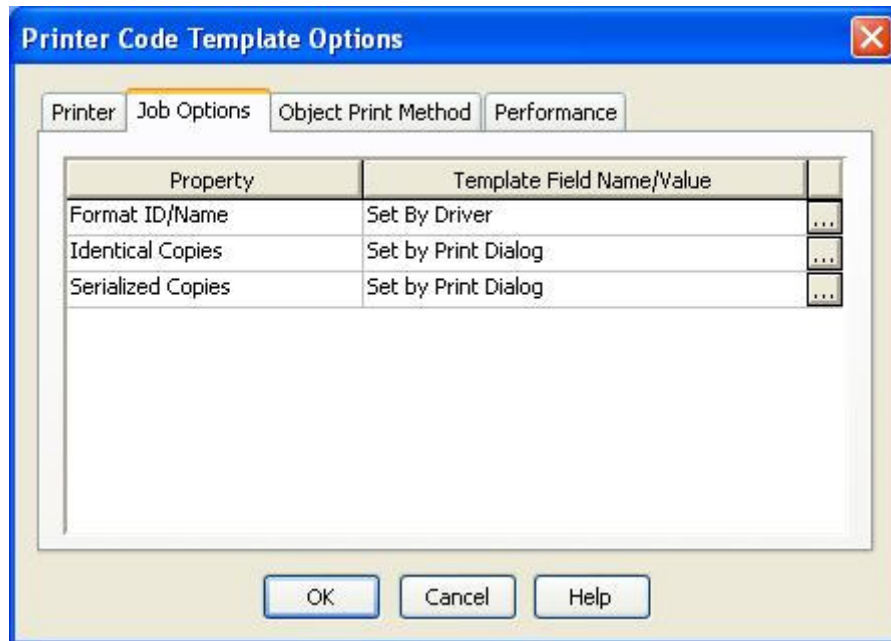
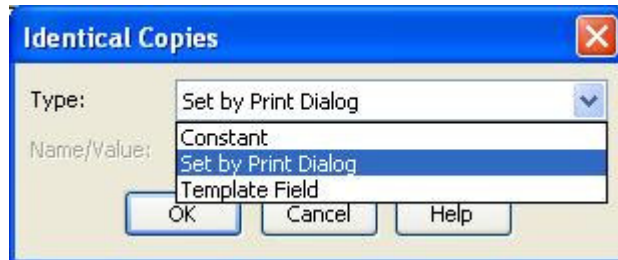
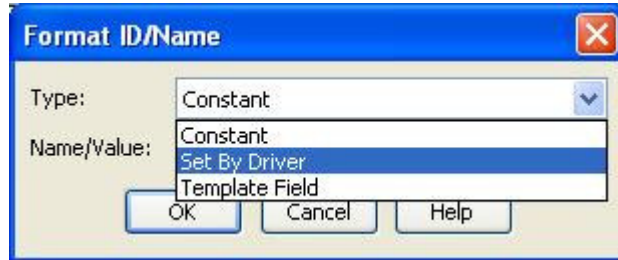
6.4.1.4 Select **“More Options”** and the following window appears on

the screen. The system defaults for **“Job Options”** are:

“Format ID/Name” : **“Type”** => **“Set By Driver”**.

“Identical Copies” and **“Serialized Copies”** : **“Type”** => **“Set by Print Dialog”**.

Attention: To customize the Form name, at **“Format ID/Name”**, set **“Type”** to **“Constant”**, then enter the required name in **“Name/Value”**.



The completed settings are shown on the above illustration. Finally, click **“OK”**, then **“Export”**.

6.4.1.5 If the download is successful, ArgoKee's LCD will exit the **“LOADING FORM ... (HOST ==> K/BOARD)”** mode.

Otherwise, it will remain in the same mode.

6.4.1.6 During the above downloading process, if the system default was

used, then the Form name will be **“EXPORT”**. To verify if the Form-making has been successfully loaded, press the “P” key on ArgoKee to enter print mode. ArgoKee's LCD will display **“FORM SELECTION:”**. Press the “Up/Down” keys to look for the newly downloaded Form-making. If it exists, it means the downloading process was successful.

6.4.2 Download to printer

6.4.2.1 First, make sure that the PC and the printer are both using the right transmission settings, then connect both COM Port with the data cable. Turn on the printer, then wait for the message **“READY (300,PPLB)”** to appear on the printer's LCD.

6.4.2.2 Follow the steps in [section 6.4.1.2](#).

6.4.2.3 Under **“File -> Export Printer Code Template”**, select **“Argox ArgoKee(FLASH)”** or **“Argox READER(FLASH)”**.

6.4.2.4 Follow the steps in [section 6.4.1.4](#).

6.4.2.5 The printer LCD will not show any messages if the download was successful. There are several another methods to verify the downloading status such as sending a command to the printer, or plugging in a PS/2 keyboard then checking via the printer LCD.

6.4.2.6 During the above downloading process, if the system defaults were used, then **“Argox ArgoKee(FLASH)”** will have the Form name **“EXPORT”**. **“Argox READER(FLASH)”** will have the Form name **“READER”**.

7 Using the Form-making label file

7.1 Using ArgoKee to input data

7.1.1 If **“Argox ArgoKee(FLASH)”** was used to download a Form-making to ArgoKee, if the defaults were used, then ArgoKee will contain a Form named **“EXPORT”**.

7.1.2 Connect ArgoKee to the printer using the COM Port cable. ArgoKee now becomes an input device.

7.1.3 At ArgoKee's **“S:SET -> EMULATION :”**, use the “Up/Down” keys to toggle the following settings: **”PPLA/PPLB/BASIC”**. Switch to **“PPLB”**, then press “Enter” to confirm. Now press “<ESC>” to exit and reboot ArgoKee.

7.1.4 Once ArgoKee reboots, the LCD will display **“PPLB MODE SELECTION: P:PRINT, D:DL, S:SET”**. Now, press “P” and the ArgoKee LCD will display the name of a stored Form. Use the “Up/Down” keys to browse the forms and press the “Enter” key to run

the selected Form. If data input is needed for Form, then ArgoKee will enter data input mode. The printer LCD will display the “Prompt Text”.

7.2 Using PS/2 keyboard to enter the data.

7.2.1 If **“Argox ArgoKee(FLASH)”** was used to download a Form-making to the printer, if the defaults were used, then the printer will contain a Form named **“EXPORT”**.

7.2.2 First, connect the PS/2 keyboard to the printer, then start the X-3200 PPLB. Wait for few moments, then the printer LCD will show the message **“READY (300,PPLB) <ESC> FOR KEYBD”**. Press the **“<ESC>”** key on the keyboard to enter the data.

7.2.3 The printer LCD will now show the name of a Form stored on the printer. Use the “Up/Down” keys to browse all the Forms, then click on the “Enter” key to execute the selected Form. If the Form being executed requires a data input, the printer will enter data input mode and display the “Prompt Text” on the LCD. The **“Prompt Text”** can be modified in BarTender.

7.2.4 To leave the data input mode, simply disconnect the PS/2 keyboard and turn off the printer.

7.3 Using a scanner to input data

7.3.1 If **“Argox READER(FLASH)”** was used to download a Form-making to the printer, and if the defaults were used, then the printer will contain a Form named **“READER”**.

7.3.2 Start the X-3200 PPLB, then in the printer Menu, set the **“READER INSTALLED”** setting to **“YES”**, save, and then reboot.

7.3.3 After printer reboots, it will find a Form named **“READER”** in Flash and run it. If the Form requires data input the printer will enter data input mode and display the “Prompt Text” on the LCD. The **“Prompt Text”** can be modified in BarTender.

7.3.4 Now connect the scanner to the printer using a PS/2 cable to allow data input.

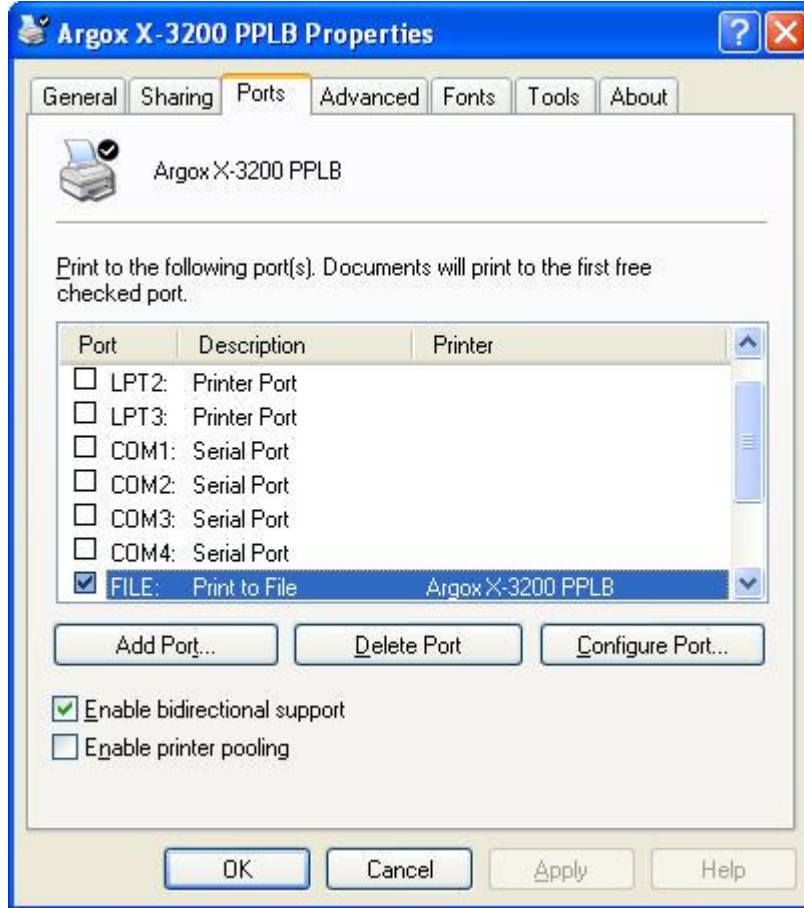
7.3.5 To exit the data input mode, press and hold the “CANCEL/RESET” button on the printer before turning the printer on. Wait until the printer LCD shows the string **“RESET”** before releasing the “CANCEL/RESET” button. Only then will the printer exit the data input mode.

8 Data variables in Form-making

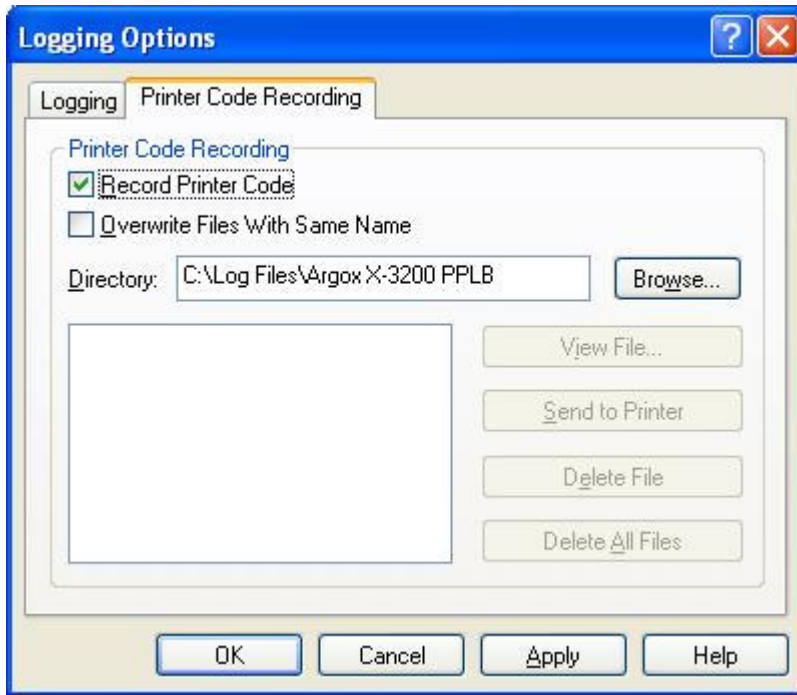
The next chapter uses the X-3200 PPLB printer as an example. The following simple examples will only require converted data. There are two methods for

acquiring the output file data.

The first method: Change the printer's **"Ports"** under **"FILE"** in **"Start -> Printers and Faxes -> Argox X-3200 PPLB -> Properties -> Ports"**. Check **"FILE"**, and then click **"OK"**.



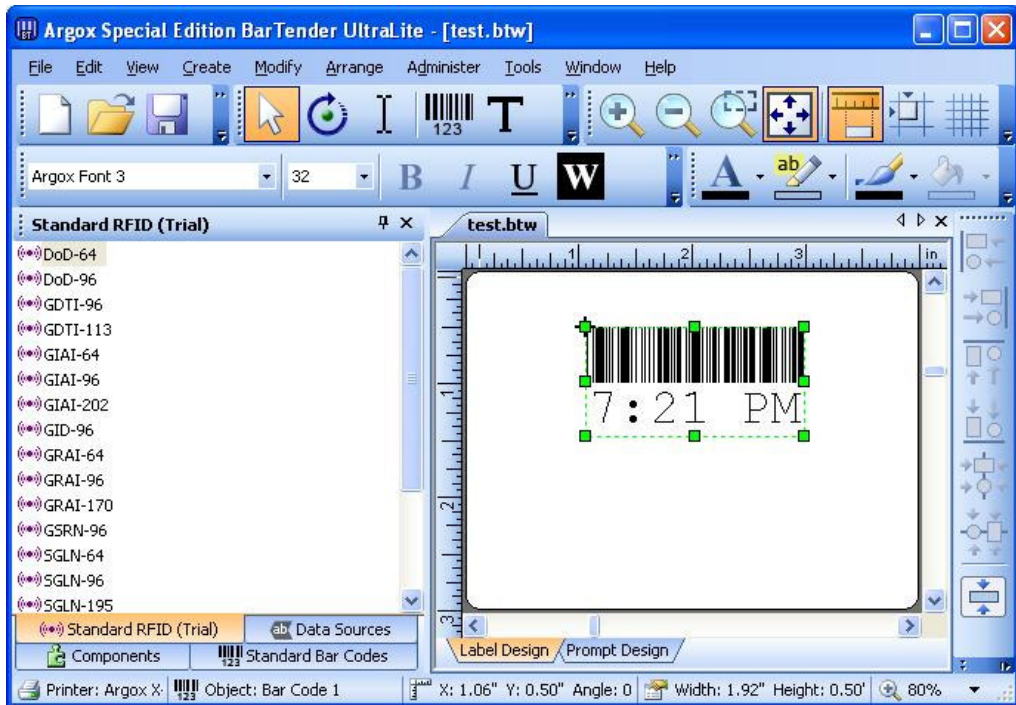
The second method: Use the **"Printer Code Recording"** function offered by Seagull Driver. The path **"Start -> Printers and Faxes -> Argox X-3200 PPLB -> Properties -> Tools -> Logging Options -> Printer Code Recording"**. Check **"Record Printer Code"**, and then click **"OK"**. For more information, please refer to the **"Guide to Argox Printer Transmission Information.doc"**.



Following example, we chose the first method. Before continuing on to the following example, follow the steps outlined in [section 6.4.1.2](#) to select the Argox X-3200 PPLB printer, create a 4 X 3 inch blank label, and then convert it using the “Argox ArgoKee(FLASH)” method.

8.1 TT variable

8.1.1 Select “**Create -> Bar Code**”, then click anywhere on the label to create a “Bar Code Object”.



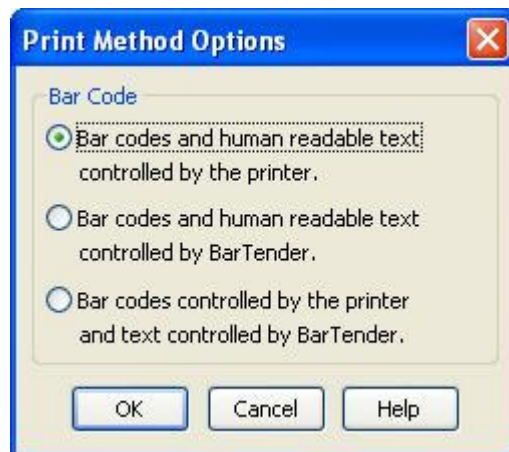
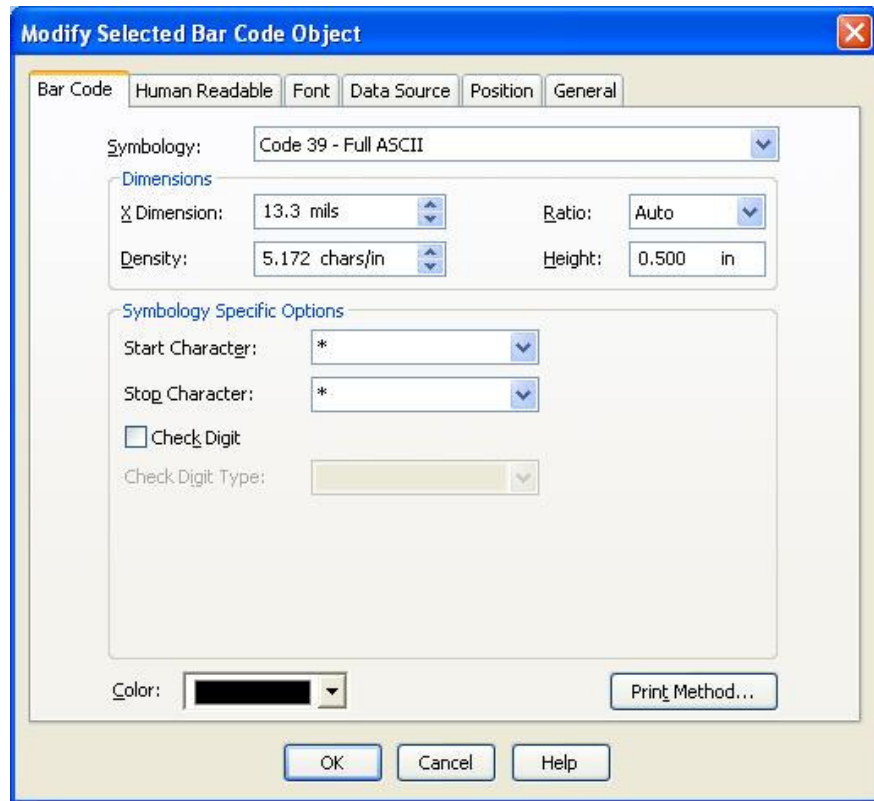
8.1.2 Right-click on the “Bar Code Object”, then in the newly opened

window, clicks **“Properties”**. The window for modifying the content of the “Bar Code Object” will now appear.

8.1.2.1 Bar Code

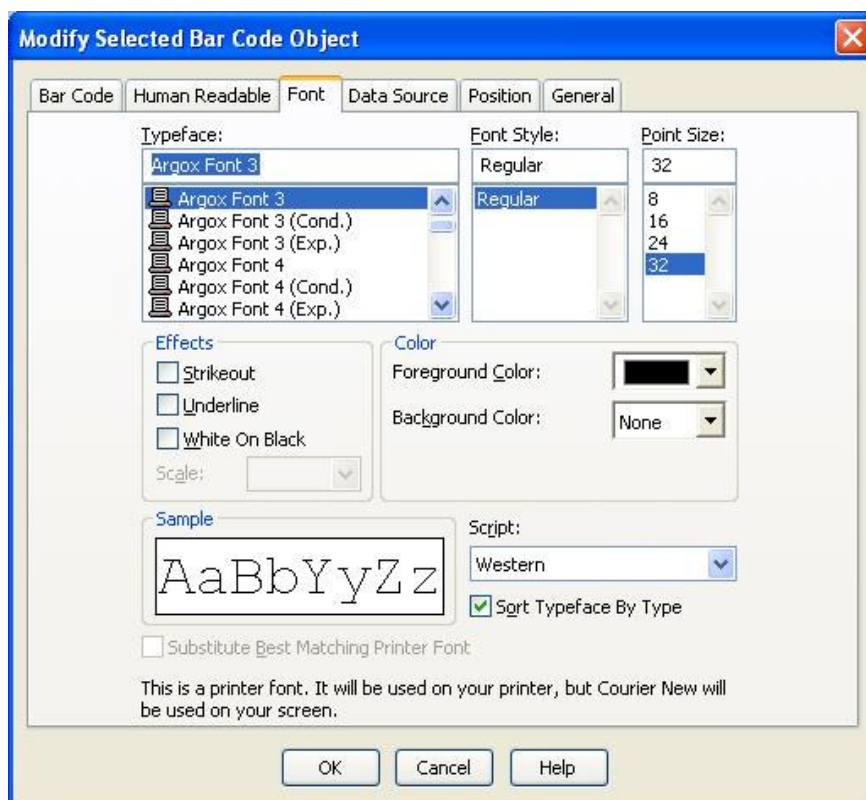
Check the **“Print Method -> Bar codes and human readable text controlled by the printer”** option. If this option is not available, then the “TT” variable output is not available.

The barcode type can be changed in the **“Symbology”** menu.



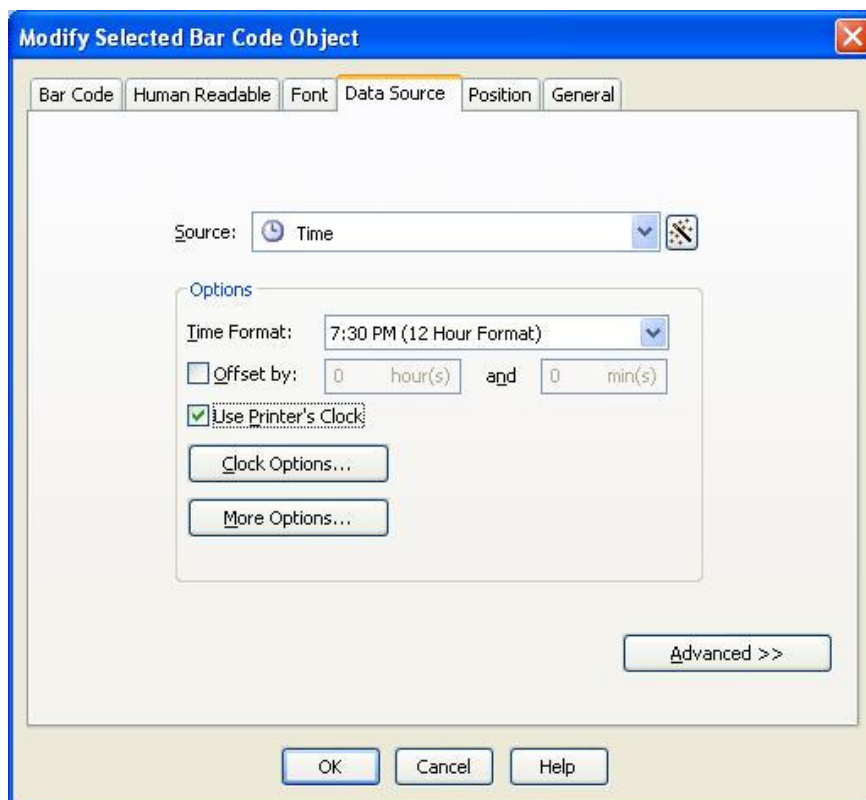
8.1.2.2 Font

An Argox font must be selected. A wrong selection will result the “TT” variable cannot be converted.



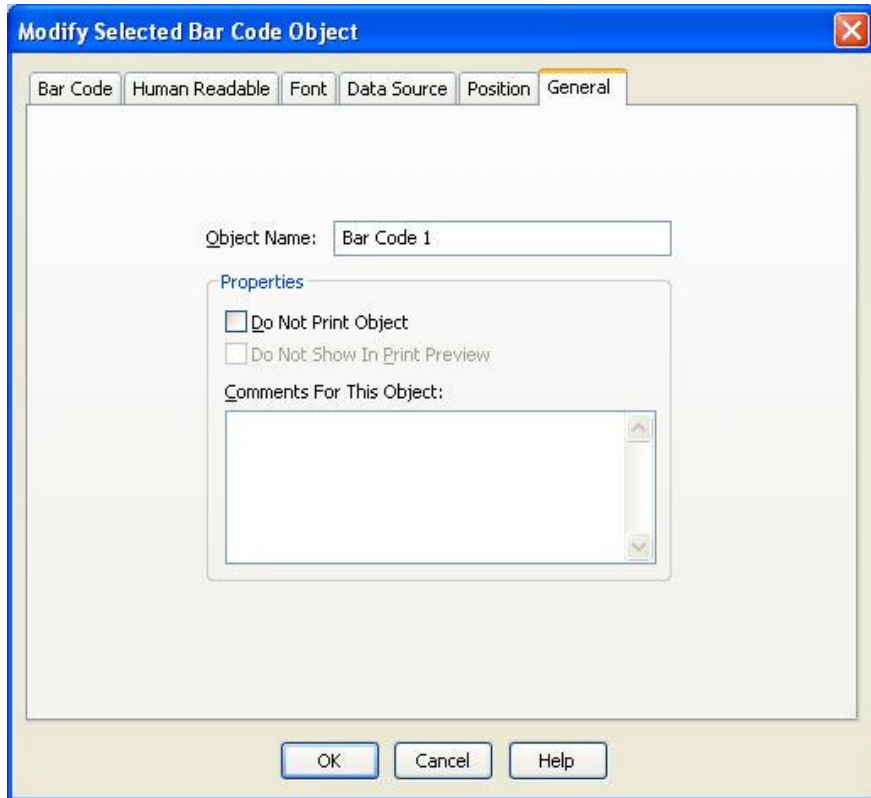
8.1.2.3 Data Source

Select **“Source -> Time”** and check **“Use Printer’s Clock”**. If the option is not checked, the **“TT”** variable cannot be converted. The time format can be changed in the **“Time Format”** menu.



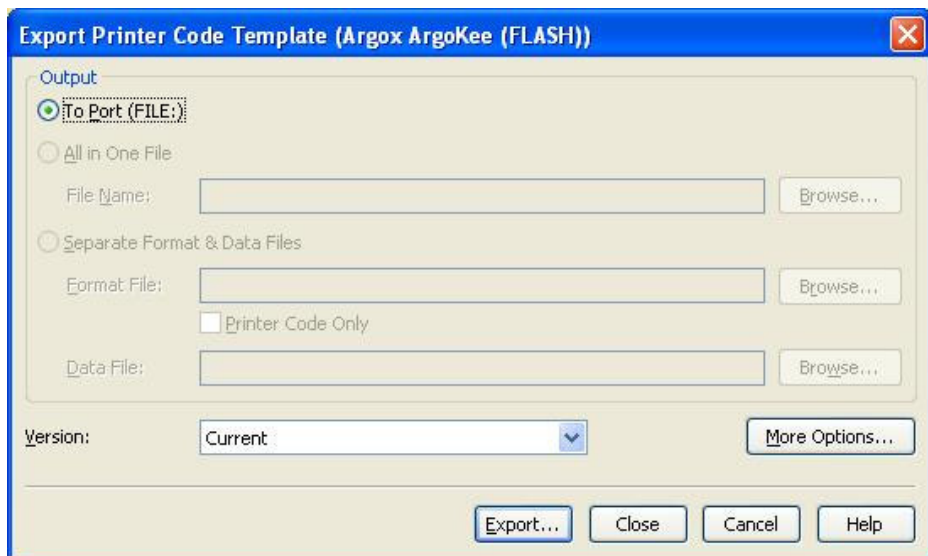
8.1.2.4 General

Verify that the **“Object Name”** is **“Bar Code 1”**.



8.1.2.5 Any other changes can also be set here. When done, click **“OK”**.

8.1.3 Under **“File -> Export Printer Code Template”**, run **“Argox ArgoKee(FLASH)”** and the **“Export Printer Code Template”** window will appear as shown below.



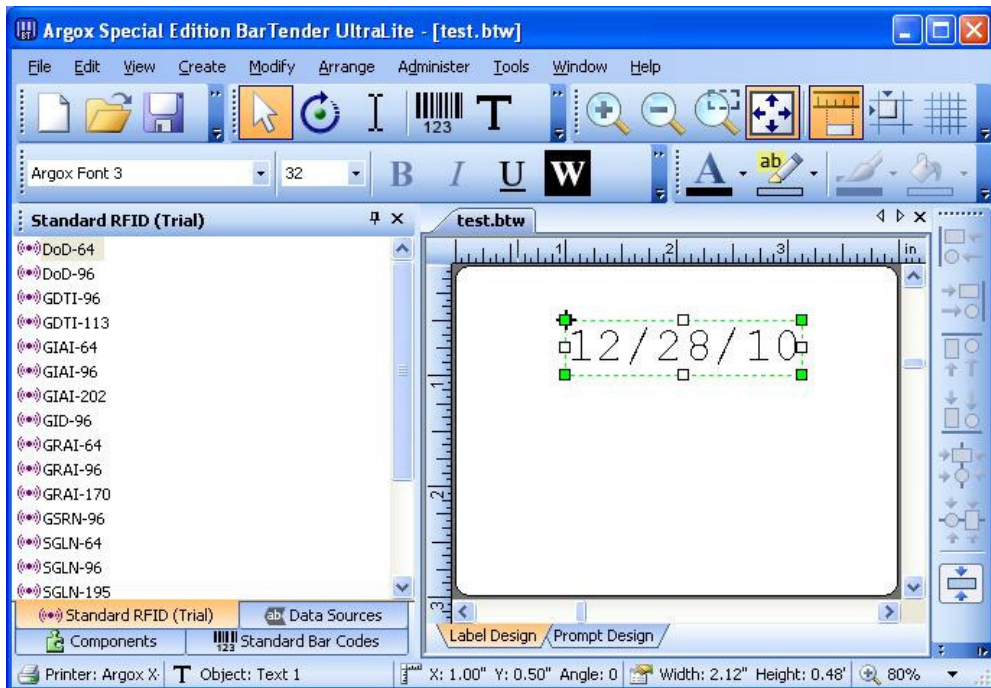
8.1.4 Carry out the steps from [section 6.4.1.4](#). As an example, we changed the Form name to **“TIME”**, then click **“Export”**.

8.1.5 Data conversion

ZS
FK"TIME"
FS"TIME"
I8,1,001
q1215
S4
O
JF
ZT
Q900,37
←KI81
N
TTh/Zm +
B900,781,2,3,4,10,150,B,TT
FE
ZN

8.2 TD variable

8.2.1 Select **“Create -> Text”**, then click anywhere on the label to create a **“Text Object”**.



8.2.2 Right-click on the **“Text Object”**, then in the newly opened window, clicks **“Properties”**. The window for modifying the content of the **“Text Object”** will now appear.

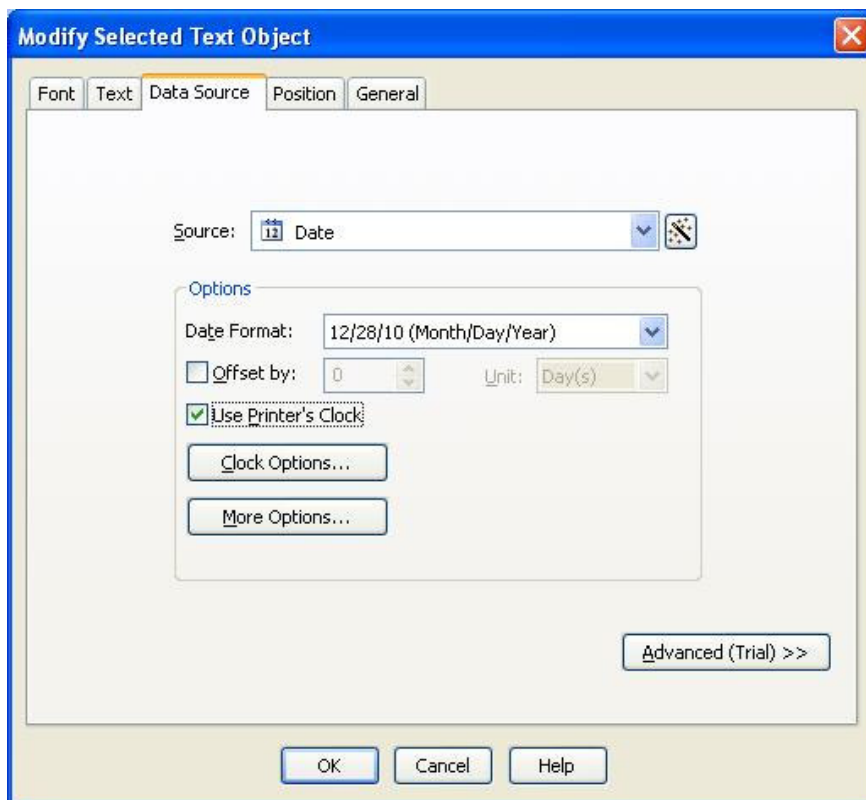
8.2.2.1 Font

An Argox font must be selected. A wrong selection will result the “TD” variable cannot be converted.

8.2.2.2 Data Source

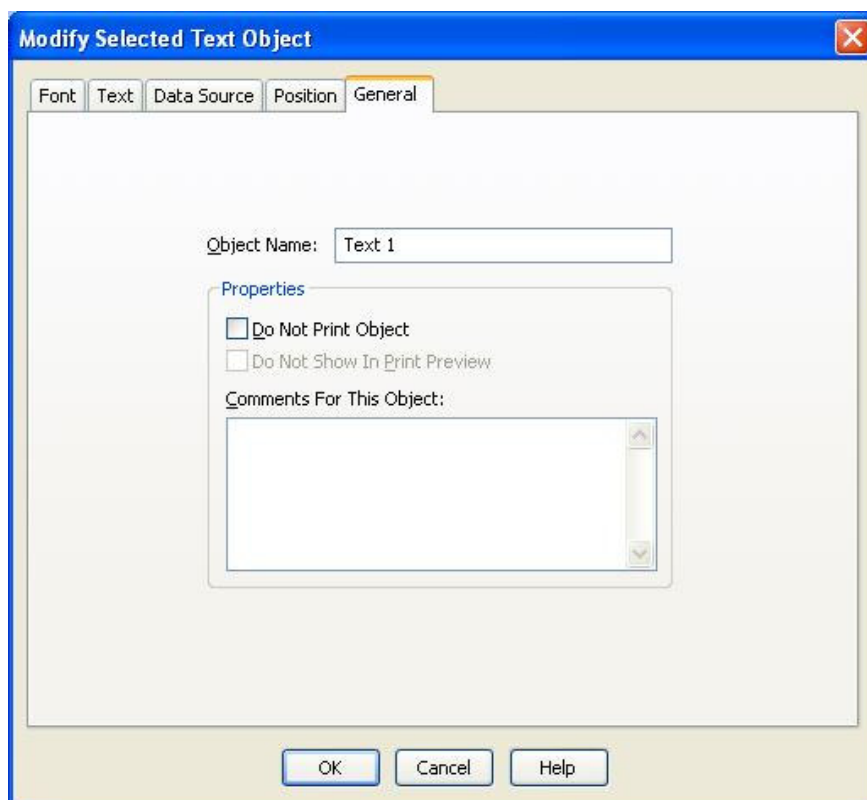
Select **“Source -> Date”** and check **“Use Printer’s Clock”**. If the option is not checked, the “TD” variable cannot be converted.

The date format can be changed in the **“Date Format”** menu.



8.2.2.3 General

Verify that the **“Object Name”** is “Text 1”.



8.2.2.4 Any other changes can also be set here. When done, click **“OK”**.

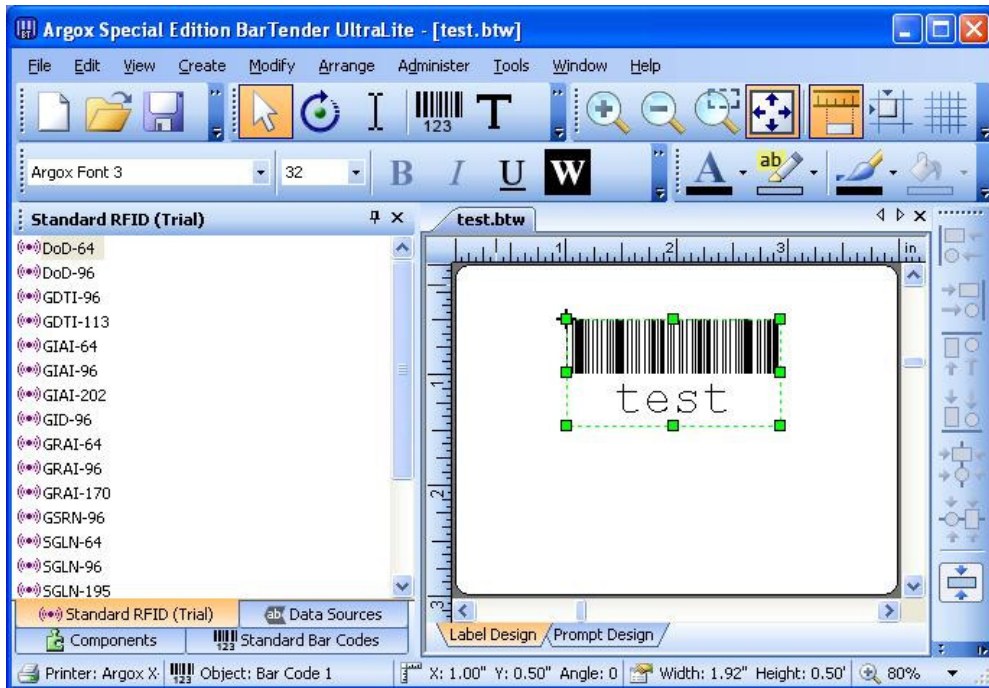
8.2.3 Carry out the steps from [section 8.1.3-8.1.4](#). As an example, we changed the Form name to **“DATE”**, then click **“Export”**.

8.2.4 Data conversion

ZS
 FK"DATE"
 FS"DATE"
 I8,1,001
 q1215
 S4
 O
 JF
 ZT
 Q900,37
 ←KI81
 N
 TDmn/dd/y2
 A923,764,2,3,4,4,N,TD
 FE
 ZN

8.3 V variable

8.3.1 Select **“Create -> Bar Code”**, then click anywhere on the label to create a “Bar Code Object”.



8.3.2 Right-click on the “Bar Code Object”, then in the newly opened window, clicks **“Properties”**. The window for modifying the content of the “Bar Code Object” will now appear.

8.3.2.1 Bar Code

Check the **“Print Method -> Bar codes and human readable text controlled by the printer”** option. If this option is not available, then the “V” variable output is not available.

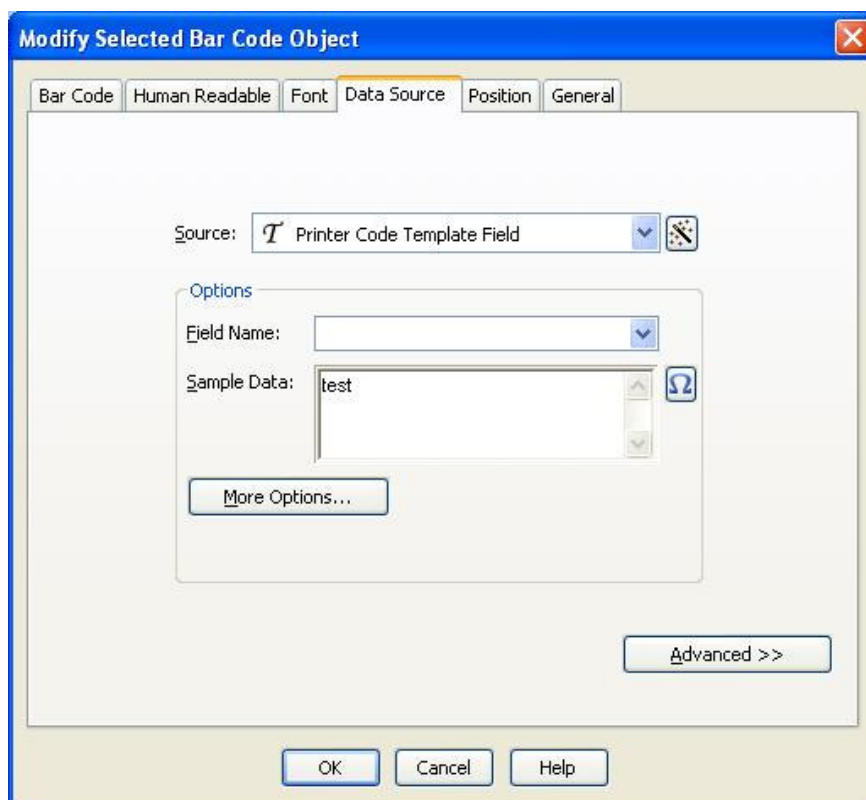
The barcode type can be changed in the **“Symbology”** menu.

8.3.2.2 Font

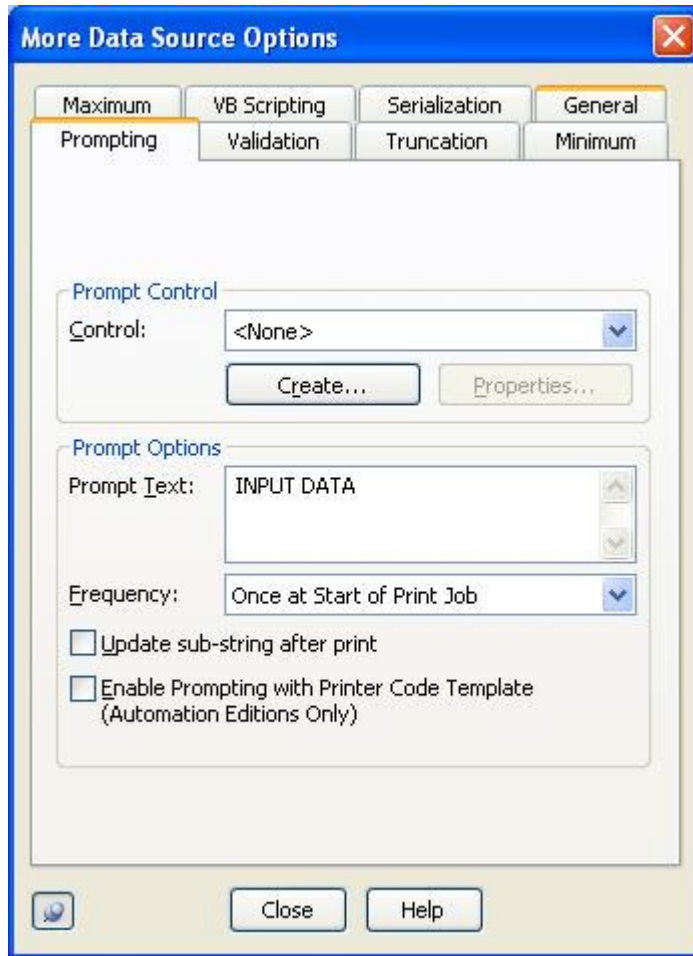
An Argox font must be selected. A wrong selection will result the “V” variable cannot be converted.

8.3.2.3 Data Source

Select **“Source -> Printer Code Template Field”**, then enter a non-null string for **“Sample Data”**. In this example, the string “test” was entered. If a null string was entered and it is **referred by a “Text Object”**, then the text object cannot be converted into the corresponding “V” variable.



Next, select **“More Options”**. Then in the **“More Data Source Options”** window, under **“Prompting -> Prompt Text”**, enter the message prompt for ArgoKee or the printer should prompt for data input. For example, in the following illustration the **“Prompt Text”** is **“INPUT DATA”**. When done, click **“Close”**.



8.3.2.4 General

Verify that the **"Object Name"** is "Bar Code 1".

8.3.2.5 Any other changes can also be set here. When done, click on **"OK"**.

8.3.3 Carry out the steps from [section 8.1.3-8.1.4](#). As an example, we changed the Form name to **"VVARIABLE"**, then click on **"Export"**.

8.3.4 Data conversion

ZS
FK"VVARIABLE"
FS"VVARIABLE"
I8,1,001
q1215
S4
O
JF
ZT
Q900,37
←KI81

N

V00,20,N,"INPUT DATA"

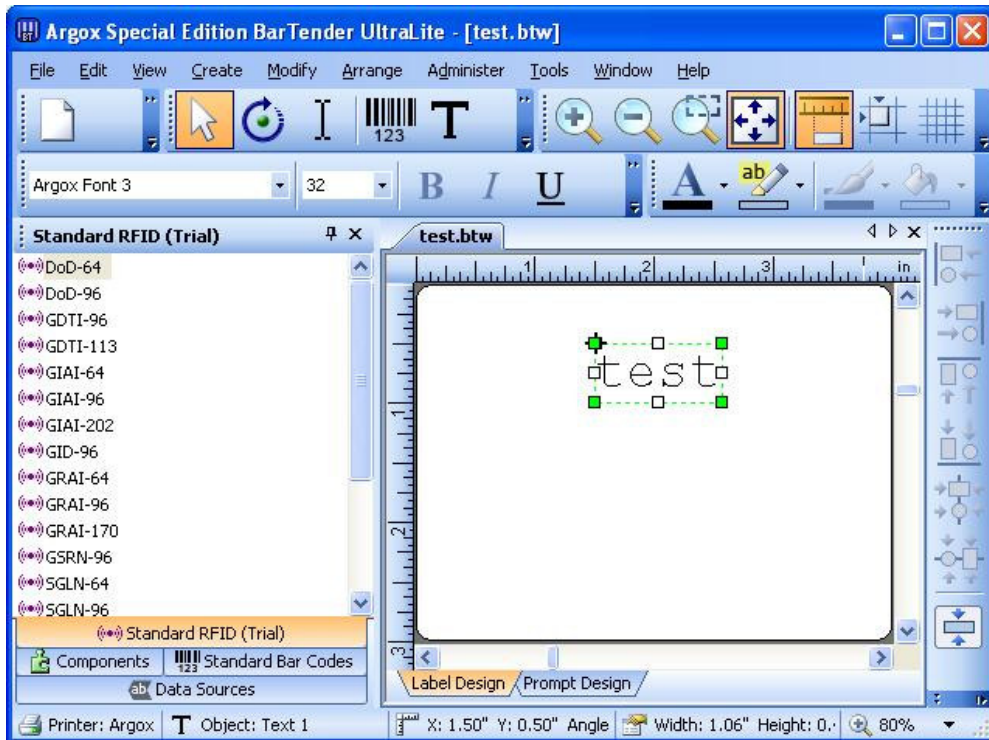
B817,781,2,3,4,10,150,B,V00

FE

ZN

8.4 C variable

8.4.1 Select **“Create -> Text”**, then click anywhere on the label to create a **“Text Object”**.



8.4.2 Right-click on the **“Text Object”**, then in the newly opened window, clicks **“Properties”**. The window for modifying the content of the **“Text Object”** will now appear.

8.4.2.1 Font

An Argox font must be selected. A wrong selection will result the **“C”** variable cannot be converted.

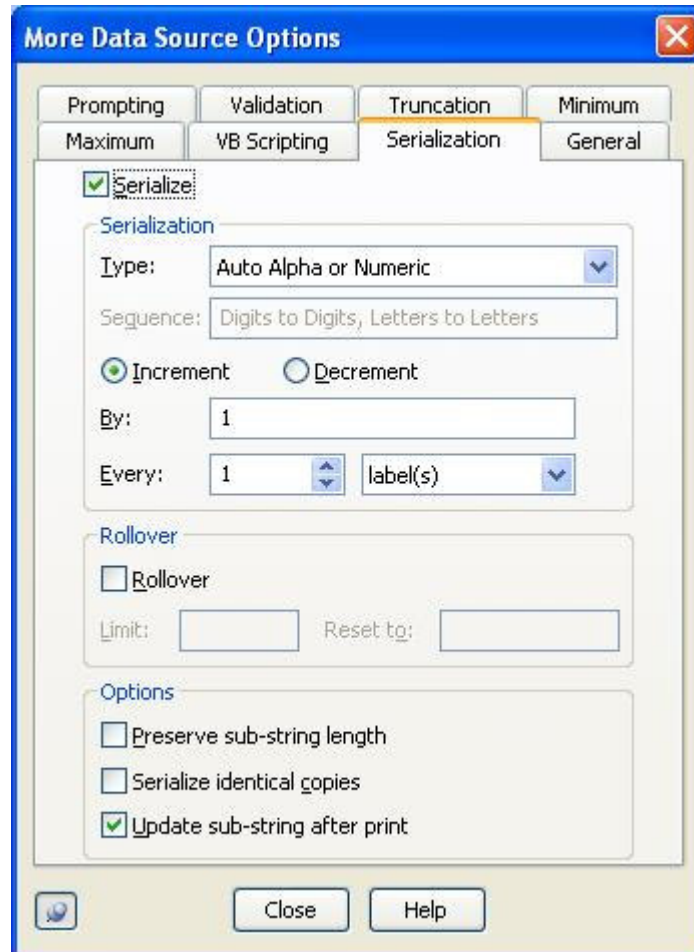
8.4.2.2 Data Source

Select **“Source -> Printer Code Template Field”**, and then enter a non-null string for **“Sample Data”**. In this example, the string **“test”** was used as the input. **If a null string was used here, the “C” variable or “V” variable cannot be converted.** Here, it is the **“C”** variable that cannot be converted.

Next, select **“More Options”**. Then in the **“More Data Source Options”** window, under **“Prompting -> Prompt Text”**, enter the

message prompt for ArgoKee or the printer should prompt for data input. For example, in the following picture the **“Prompt Text”** is **“SERIAL COUNT”**.

Check the **“Serialization -> Serialize”** option. If the option is not checked, then the “C” variable cannot be converted. When done, click **“Close”**.

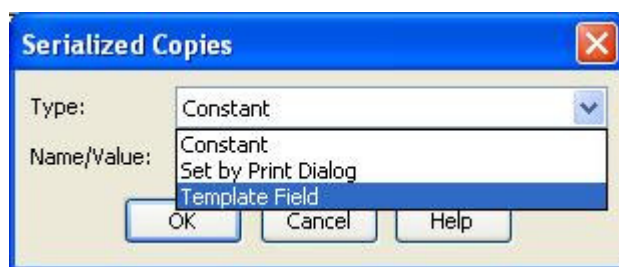


8.4.2.3 General

Verify that the **“Object Name”** is “Text 1”.

8.4.2.4 Any other changes can also be set here. When done, click **“OK”**.

8.4.3 Carry out the steps from [section 8.1.3-8.1.4](#) but at **“Job Options -> Serialized Copies”** setting, change the type to **“Template Field”**. A constant number such as 1 must also be given for the **“Name/Value”** field or the “C” variable cannot be converted. As an example, we changed the Form name to **“CVARIABLE”**. Finally, click **“Export”**.



8.4.4 Data conversion

ZS

FK"CVARIABLE"

FS"CVARIABLE"

I8,1,001

q1215

S4

O

JF

ZT

Q900,37

←KI81

N

ZN

C0,20,N,+1,"SERIAL COUNT"

A770,764,2,3,4,4,N,C0

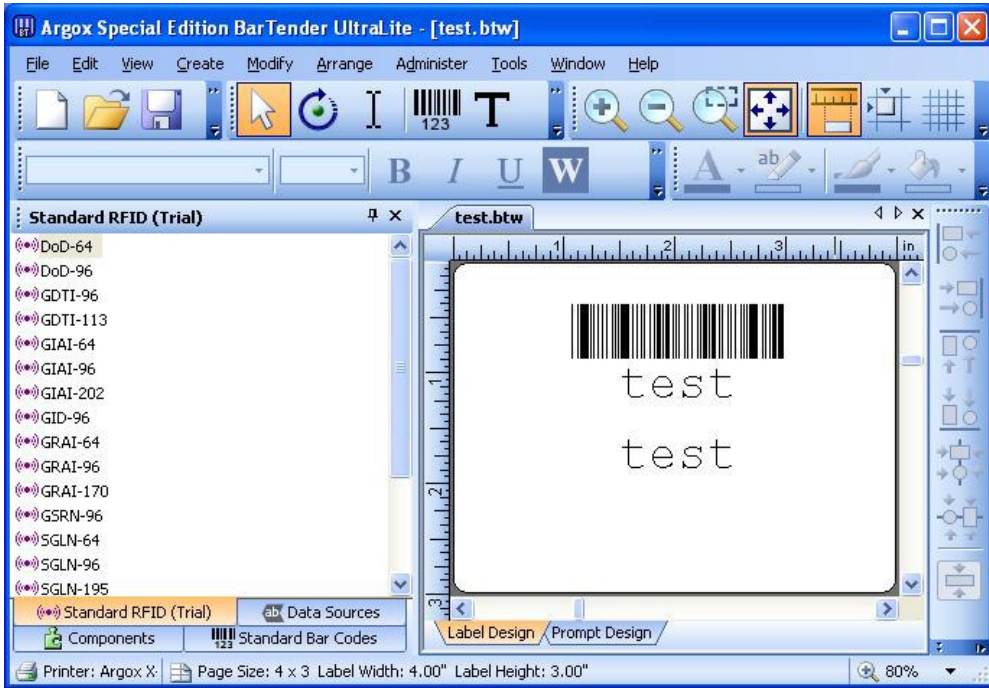
FE

ZN

8.5 Reference

8.5.1 Carry out the steps from [section 8.3.1-8.3.2](#). The **“Object Name”** of this “Bar Code Object” is “Bar Code 1”.

8.5.2 Next, select **“Create -> Text”**, then click anywhere on the label to create a "Text Object".



8.5.3 Right-click on the “Text Object”, then in the newly opened window, clicks on **“Properties”**. The window for modifying the content of the “Text Object” will now appear.

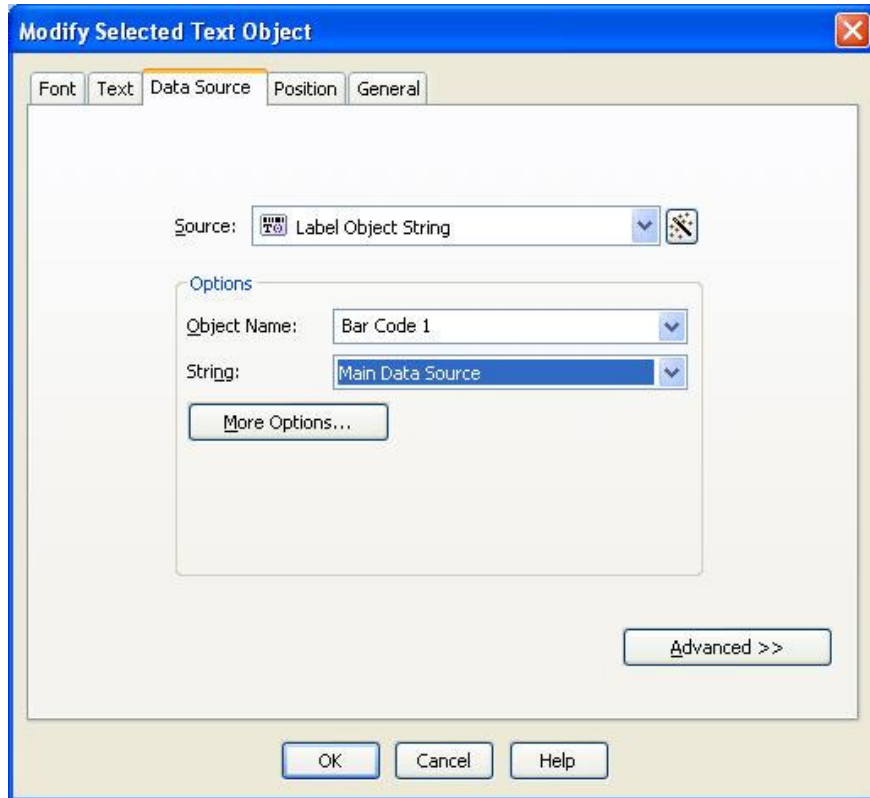
8.5.3.1 Font

An Argox font must be selected. A wrong selection will result the corresponding variable cannot be converted.

8.5.3.2 Data Source

Select **“Source -> Label Object String”**. The next step is setting the reference object and information.

Select the reference object at **“Options -> Object Name”**. Then select the previously created “Bar Code 1”. Next, select **“String -> Main Data Source”**. A wrong selection will result the corresponding variable cannot be converted.



8.5.3.3 General

Verify that the **“Object Name”** is “Text 1”.

8.5.3.4 Any other changes can also be set here. When done, click **“OK”**.

8.5.4 Carry out the steps from [section 8.1.3-8.1.4](#). As an example, we changed the Form name to **“REFERENCE”**, then click **“Export”**.

8.5.5 Data conversion

ZS

FK"REFERENCE"

FS"REFERENCE"

I8,1,001

q1215

S4

O

JF

ZT

Q900,37

←KI81

N

V00,20,N,"INPUT DATA"

B888,781,2,3,4,10,150,B,V00

A758,410,2,3,4,4,N,V00

FE

ZN